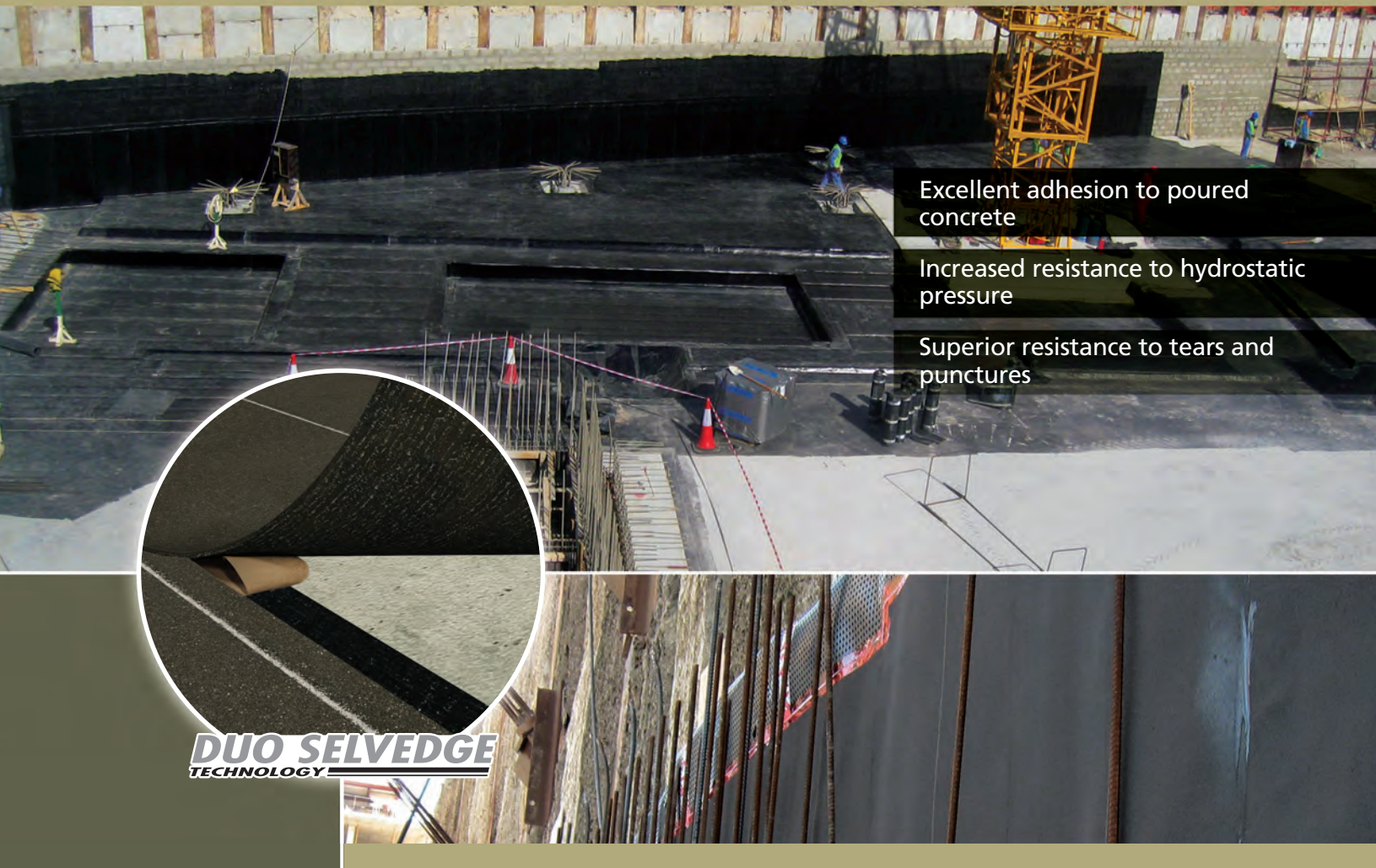




The Solution for foundations in High-Density Build-Up Areas

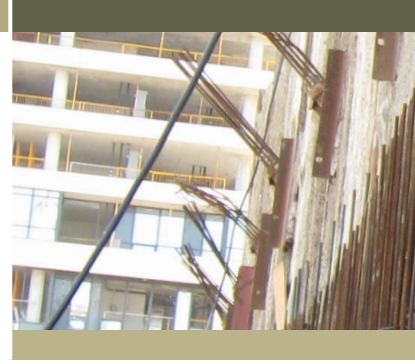
PRE-APPLIED MEMBRANE SYSTEM DESIGNED
FOR BLIND SIDE WATERPROOFING APPLICATIONS



Since 1908, SOPREMA has specialized in the manufacture of waterproofing products for the construction and civil engineering fields.

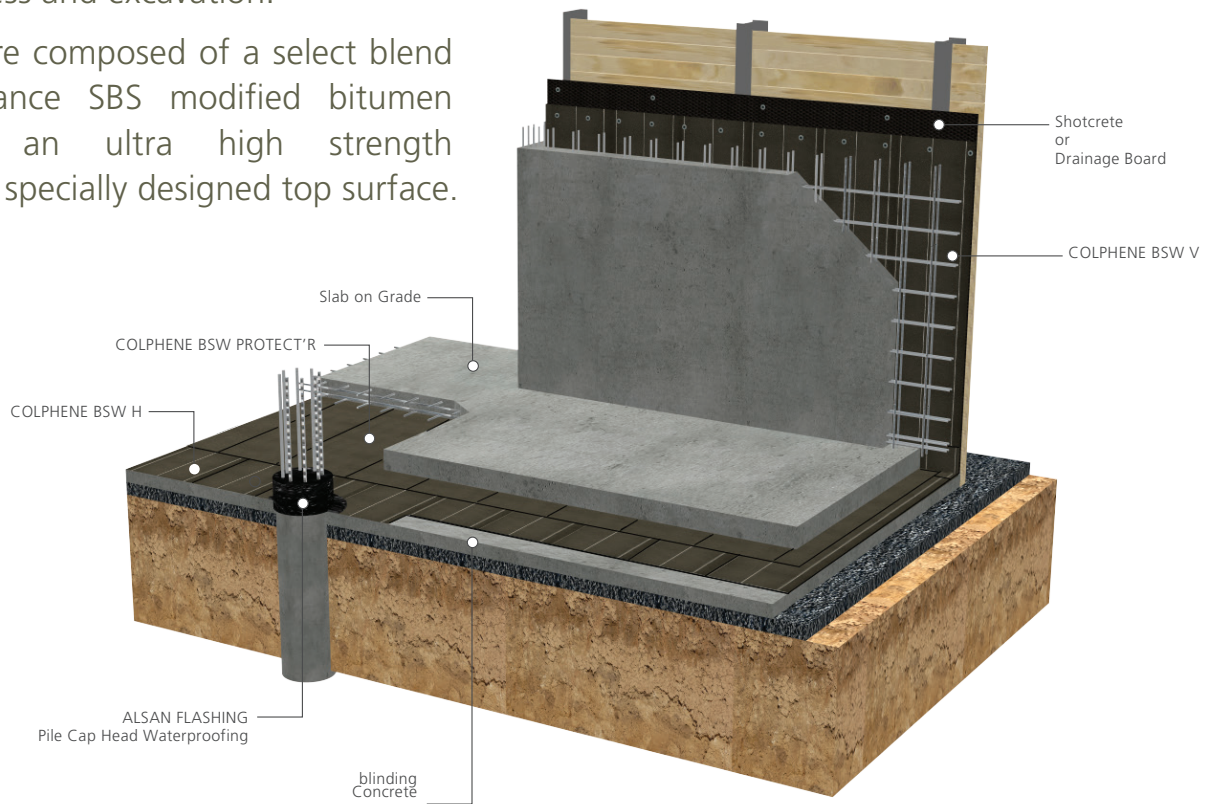


1.877.MAMMOUTH
www.soprema.ca



COLPHENE BSW is a **fully reinforced pre-applied membrane system designed for horizontal and vertical external blind side waterproofing applications**. Its unique design offers the possibility to use it where nearby buildings limit access and excavation.

The membranes are composed of a select blend of high performance SBS modified bitumen combined with an ultra high strength reinforcement and specially designed top surface.



Benefiting from the effects of the exothermic reaction that occurs during the curing process of the concrete, the COLPHENE BSW system has superior adhesion to concrete due to chemical and mechanical bond featuring:

CONTINUOUS BOND

Continuous and homogenous bond to structural concrete

PEEL STRENGTH

Excellent adhesion to the structural poured concrete surface according to ASTM D903



The top face of the membrane is SBS modified bitumen covered with sand. The specially formulated surface softens slightly as the concrete starts to cure, releasing heat. This contributes to promote adhesion of the membrane to the concrete, and prevents the ingress or migration of water around the structure.



COLPHENE BSW V

COLPHENE BSW V is designed for vertical blind side waterproofing applications. It is composed of high performance SBS modified bitumen combined with an ultra-high strength composite reinforcement. The surface is sanded and the underface is self-adhesive protected with a silicone release film. COLPHENE BSW V is provided with DUO SELVEDGE technology.

COLPHENE BSW H

COLPHENE BSW H is designed for horizontal blind side waterproofing applications. It is composed of high performance SBS modified bitumen combined with a polyester reinforcement. The surface is sanded and the underface is protected with a thermofusible plastic film. Its unique design, including the DUO SELVEDGE technology, allows welding of side laps using a torch or a hot air gun.

DIMENSIONS	
10 X 1 m (33 x 3.3 ft)	
THICKNESS	
3.0 mm (120 mil)	3.5 mm (140 mil)
APPLICATION METHOD	
Self-adhesive with heat-welded laps	Loose-laid with heat-welded laps

DUO SELVEDGE TECHNOLOGY

For the safest installation, COLPHENE BSW V and COLPHENE BSW H are provided with DUO SELVEDGE, a unique technology developed and patented by SOPREMA in 2004.

Over the entire width of DUO SELVEDGE, fifty percent (50%) of the surface is covered with exposed sticky bitumen. The remaining surface of the selvedge (50%) is covered by a thermofusible plastic film to seal overlap by heat welding.



DUO SELVEDGE
TECHNOLOGY





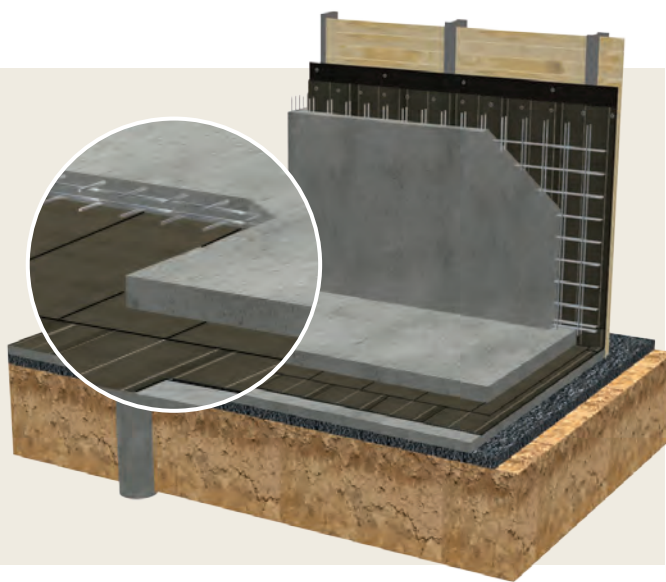
ACCESSORIES

COLPHENE BSW PROTECT'R

COLPHENE BSW PROTECT'R is a fully reinforced protection sheet specially designed for horizontal blind side waterproofing applications. It is composed of high performance SBS modified bitumen combined with an ultra-high strength composite reinforcement.

BENEFITS

- Protects the COLPHENE BSW H from damage due to foot traffic, rebar installation and material storage to its surface



ALSAN FLASHING*

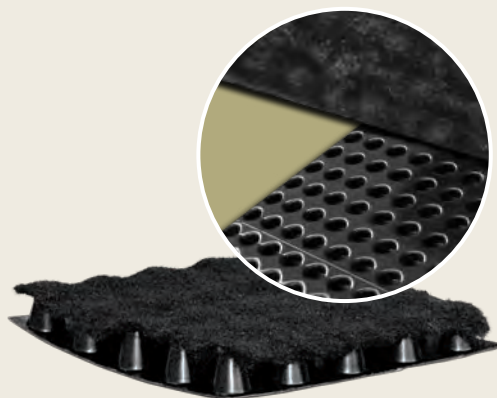
Polyurethane/bitumen liquid waterproofing membrane used in combination with FLASHING REINFORCEMENT for sealing around penetrations.

SOPRADRAIN 10-G

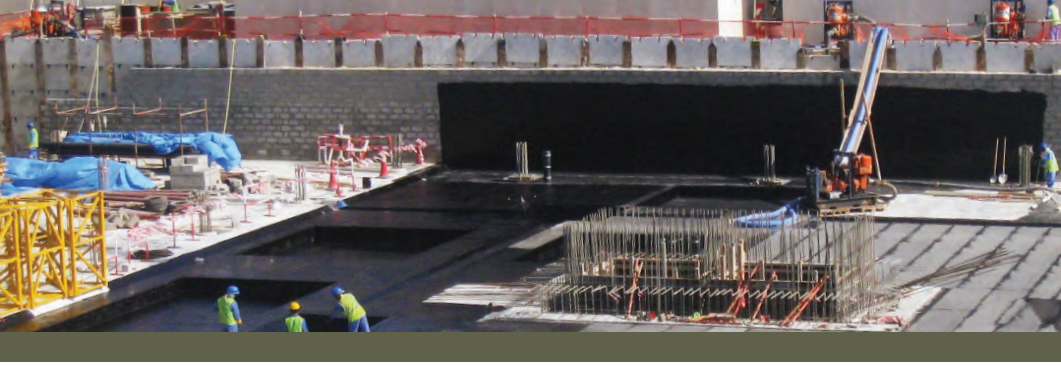
High-density drainage panel with a factory-laminated filter fabric geo-textile. It is used over blinding on vertical surface before installation of COLPHENE BSW.

BENEFITS

- Promotes better flow toward drains
- Reduces hydrostatic pressure
- Provides a smooth surface for application of the COLPHENE BSW V



*Available in 3.78 L or 19 L pails

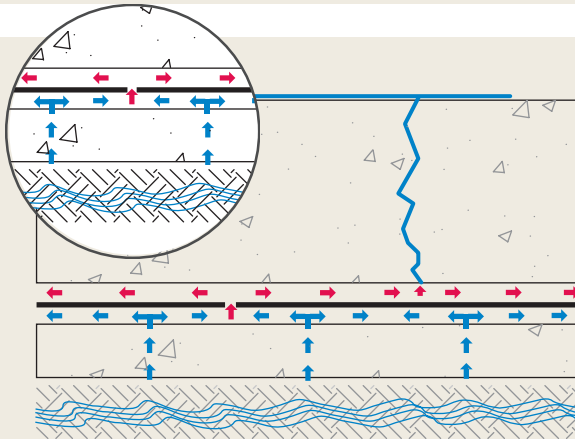
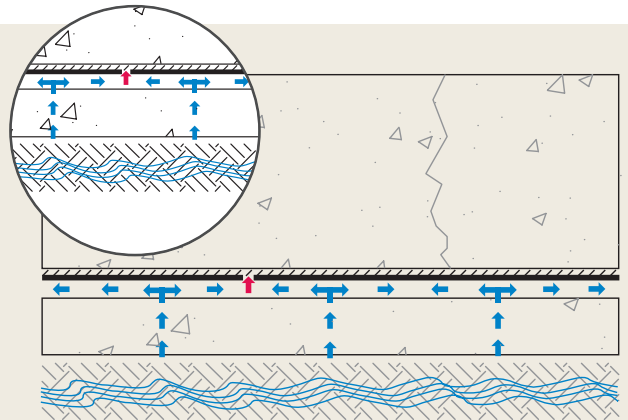


CONCEPT

COLPHENE BSW

(Pre-applied membrane system Fully Bonded to Structural Concrete)

As it is a natural behaviour of concrete to crack, it is important to protect it from water infiltration. The technology and concept of Colphene BSW ensure a full adhesion of waterproofing system to the foundation.



WATERPROOFING SYSTEM

(When not Bonded to the Structural Concrete Slab)

When water migration between waterproofing membrane and structural concrete membrane is present, the structure becomes vulnerable and the remedy is expensive.



colphene
BSW



1.877.MAMMOUTH
www.soprema.ca